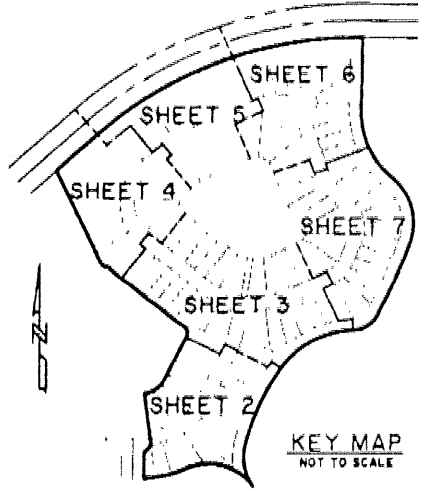


# BAYWINDS R.P.D. PLAT NO. 4

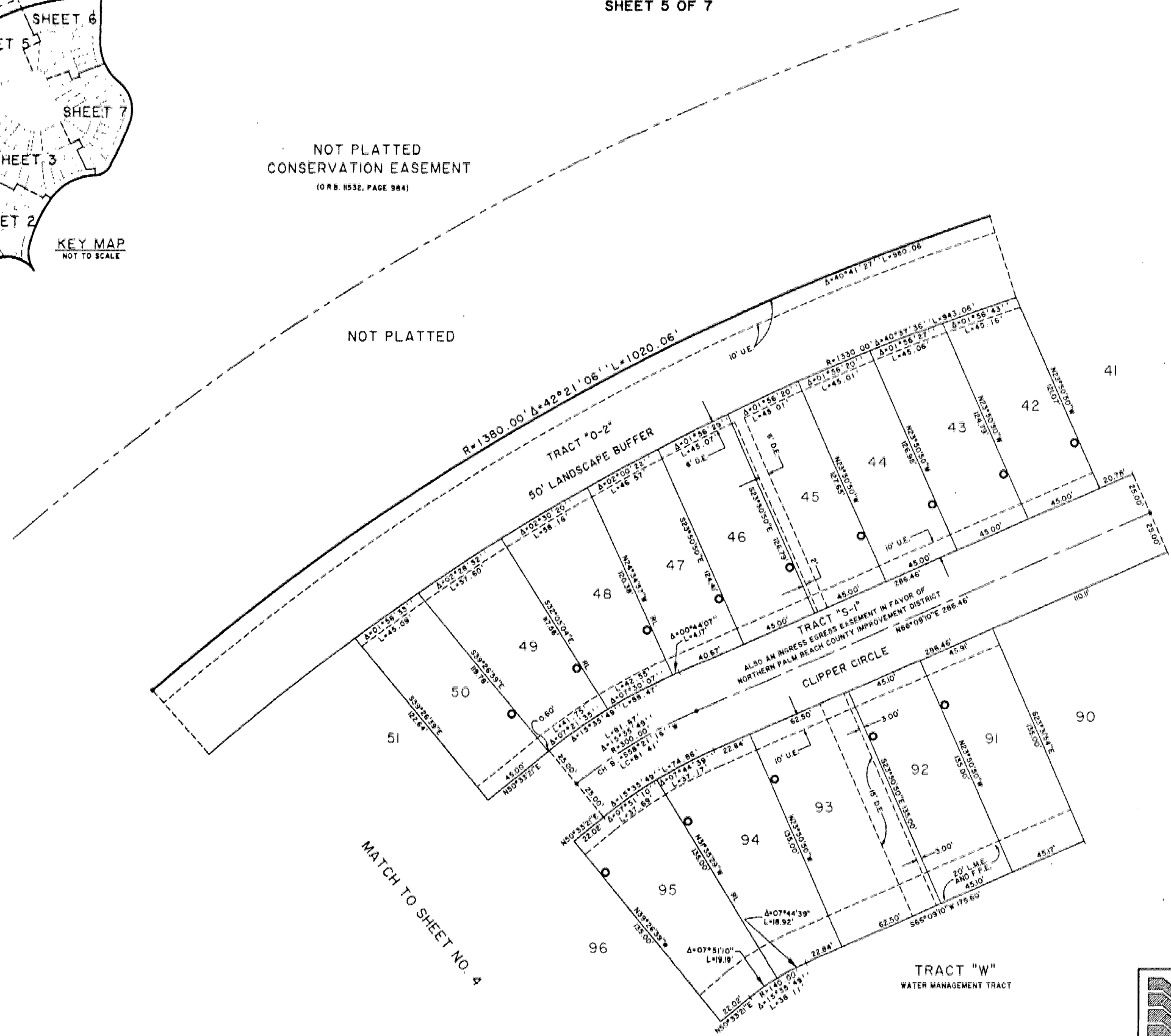
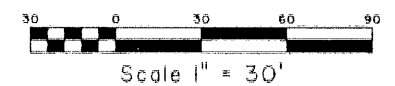
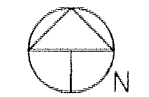
BEING A PORTION OF SECTION 19, TOWNSHIP 43 SOUTH, RANGE 42 EAST,  
 LYING IN SECTION 19, TOWNSHIP 43 SOUTH, RANGE 42 EAST,  
 CITY OF WEST PALM BEACH, PALM BEACH COUNTY, FLORIDA.  
 SHEET 5 OF 7

186

STATE OF FLORIDA  
 COUNTY OF PALM BEACH  
 THIS PLAT WAS FILED FOR RECORD AT \_\_\_\_\_  
 ON \_\_\_\_\_ DAY OF \_\_\_\_\_ 2001  
 AND DULY RECORDED IN PLAT BOOK NO. \_\_\_\_\_  
 ON PAGE \_\_\_\_\_  
 DOROTHY H. WILKEN, CLERK OF THE CIRCUIT COURT  
 BY \_\_\_\_\_ DC

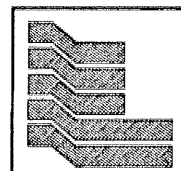


NOT PLATTED  
 CONSERVATION EASEMENT  
 (O.R.B. 11532, PAGE 984)



MATCH TO SHEET NO. 6

MATCH TO SHEET NO. 4



**Landmark Surveying & Mapping Inc.**  
 1850 Forest Hill Boulevard  
 Ph (561) 433-5405 Suite 100 W.P.B. Florida  
 LB # 4396  
**BAYWINDS R.P.D. PLAT NO. 4**  
 (TRACT C)